

The Mountain Research Initiative

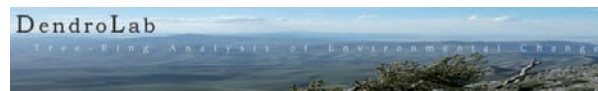
c/o Institute of Geography, University of Bern
Erlachstrasse 9a Trakt 3
3012 Bern, Switzerland

mri@giub.unibe.ch
<http://mri.scnatweb.ch>



Mountain Observatories FIRST CALL

For A Global Fair and Workshop on
Long-Term Observing Systems of Mountain Social-Ecological Systems



July 16-19 2014
University of Nevada, Reno, USA

A multi-day Fair and Workshop

What

A multi-day Fair and Workshop for all who gather data on mountain social, biological or abiotic systems to

- describe their work
- explore the questions and phenomena driving observations
- explain sensors and protocols (e.g., flagship stations, crowd-sourcing, upscaling, etc.)
- discuss data management, user access and visualization
- compare strategies for communicating data from remote locales
- visit exemplary transects and observatories
- create new collaborations
- formalize cooperative arrangements.

Why

To move toward more comprehensive observing systems for the world's mountain regions by building up from the grass-roots of existing observing systems.

Evidence-based management of social-ecological systems requires data on all components, from external drivers to the structure and function of the coupled human-natural nexus. In addition, observing networks designed to last longer than a single funding cycle are key to determine predictability in complex systems. There is however no entity with the authority to dictate such a system nor any agency that will fund centrally such an international network.

Instead, the mountain research community must synthesize a macroscopic observing system using existing regional networks and individual sites as building blocks. And the best way to do that is to come together to exchange ideas, see what other networks offer, develop common programs, assess priority locations, and develop creative financing options.

How

The underlying logic of the Fair and Workshop is that a more comprehensive mountain observing system will arise through the interplay of both bottom-up activities, in which those managing current observing systems expand those systems through collaboration with others, and top-down activities, by which researchers lay out the requirements of comprehensive mountain observing systems.



The Fair will feature a) Expositions in which participants explain their observing network or products in a poster session format and b) Side Meetings for more in-depth discussions.

The Workshop will feature a) Sessions where speakers present state-of-the-art thinking regarding mountain observations and b) Ateliers where participants work together to develop common solutions.

One day will be devoted to field trips to observing sites around the Reno/Tahoe area, with longer field trips available after July 19th to visit sites and facilities in the Sierra Nevada, Great Basin and Cascade ranges.

For whom

- Researchers and managers involved in existing observing networks focused on mountains or including mountain sites.
- Climatologists, meteorologists, hydrologists, ecologists, economists, sociologists, political scientists, anthropologists, historians or other researchers who create long-term datasets at specific sites.
- Managers of field stations and transects that generate long-term data.
- Program staff of agencies that operate or fund long-term observatories.
- Managers of long-term observational databases.
- Sensor, software and display developers.

The organizers will consider applications for partial travel support from participants outside of the US and Canada who would otherwise not be able to attend.

By whom

The Mountain Research Initiative, Institute of Geography, University of Bern, Switzerland.

DendroLab, Dept. of Geography and Mackay School of Earth Sciences and Engineering, University of Nevada, Reno, USA.

The co-organizers are working with Sponsors from around the world.



List of Sponsors

Acción, University at Albany
 Air Pollution/Climate Group, AGROSCOPE (Switzerland)
 Alpine Space-Man and Environment-University of Innsbruck (Austria)
 Appalachian Mountain Club
 Asian Network on Debris Flows (China)
 Berchtesgaden National Park (Germany)
 Centre de Recherches sur les Ecosystèmes d'Altitude (CREA) (France)
 Centre for Mountain Studies, University of Highlands and Islands (United Kingdom)
 Consortium for Integrated Climate Research in Western Mountains (CIRMOUNT)
 Consortium for Sustainable Development of the Andes (CONDESAN) (Peru)
 Dept. of Geography, Geoinformatics and Meteorology, University of Pretoria (South Africa)
 Department of Geography, University of Nevada, Reno
 Desert Research Institute
 Environmental Protection Agency of the Region of Val d'Aosta (Italy)
 Global Land Project (GLP) (Brazil)
 Global Mountain Biodiversity Assessment (GMBA) (Switzerland)
 Global Observation Research Initiative in Alpine Environments (GLORIA) (Austria)
 Great Escarpment Biodiversity Research
 Institute for Alpine Environment-European Academy of Bolzano (Italy)
 Institute for Applied Remote Sensing-European Academy of Bolzano (Italy)
 Institute for Interdisciplinary Mountain Research (IGF), Austrian Academy of Science (Austria)
 Institute for Monitoring of Climatic and Environmental Systems (Russian Academy of Sciences) (Russia)
 Institute of Mountain Hazards and Environment, Chinese Academy of Sciences (China)
 Institute of Landscape Ecology (Slovakia)
 International Centre for Integrated Mountain Development (ICIMOD) (Nepal)
 International Network of Research on Coupled Human Natural Systems (CHANS-net)
 Long Term Ecological Research Network-Europe (Poland)
 Low Cost Sensors for the Environment (pulselab), Princeton University
 Missouri Botanical Garden
 Mountain Invasives Research Network (MIREN) (Switzerland)
 Mountain LTER Network (Switzerland)



Mountain Partnership (Italy)
 Mountain Research Station, University of Colorado
 Mountain Societies Research Centre, University of Central Asia (Kyrgyz Republic)
 Mount Washington Observatory
 National Ecological Research Network (NEON)
 National Phenology Network (USGS)
 Red de Bosques Andino (Ecuador)
 Research Coordination Network program for Complex Mountain Landscapes-University of Montana
 Research Council of the Swiss National Park (Switzerland)
 Sagehen Field Station, University of California
 Science for the Carpathians (S4C) (Slovakia)
 Sierra Nevada Research Institute, University of California
 South Eastern Europe Mountain Research Network (SEEmore) (Romania)
 The Biogeography Lab, University of Colorado
 The Nevada Climate-ecohydrological Assessment Network
 United Nations Educational, Scientific and Cultural Organization (UNESCO), Man and the Biosphere (MAB) Programme (France)
 US Long-Term Ecological Research Network (LTER), University of New Mexico
 Vermont Center for Ecostudies
 Western Mountain Initiative, USGS
 Western Regional Climate Center
 Wyoming Center for Environmental Hydrology and Geophysics, University of Wyoming
 Zone Atelier Alpes, CNRS (France)

